



Style Four

Numbers 258, 259, 260, 261, 262,
265, 266, 267, 268, 269 & 270

VILLAS ON THE GREEN

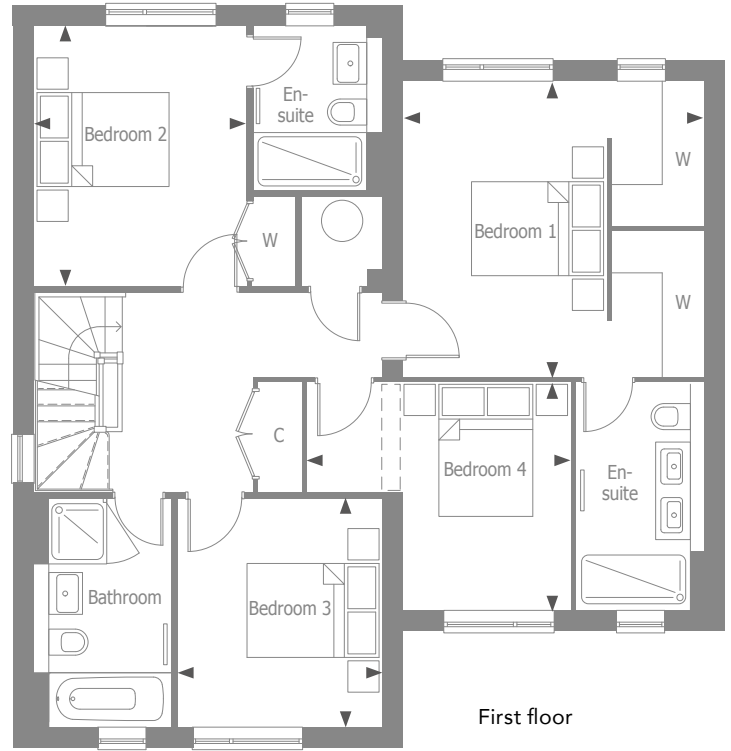
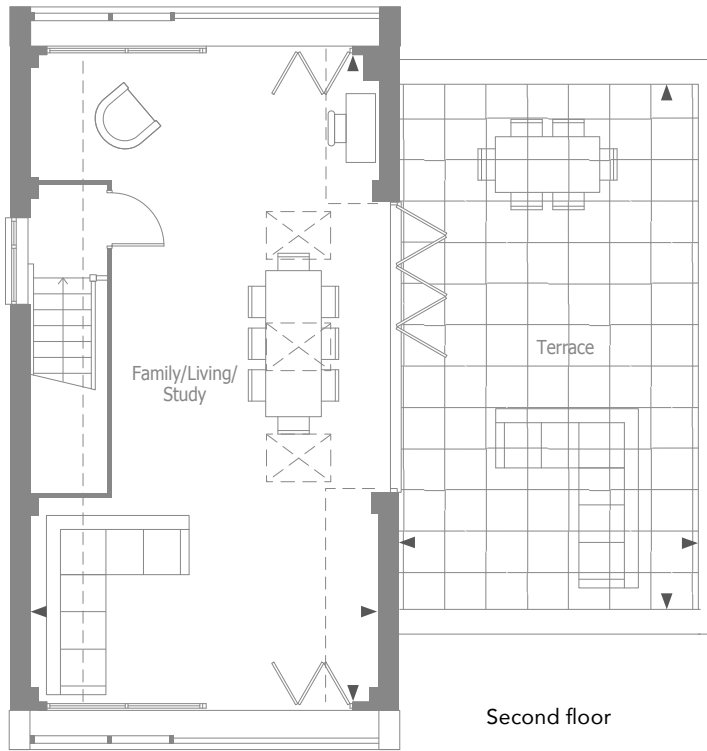
AT WOODGATE

Style Four

Numbers 285 & 336



THAKEHAM



Family/Living/Study

9.30m x 4.96m 30'6" x 16'3"

Bedroom 1

4.27m x 4.23m 14'0" x 13'10"

Bedroom 2

3.69m x 3.03m 12'1" x 9'11"

Bedroom 3

3.25m x 2.90m 10'8" x 9'6"

Bedroom 4

3.77m x 3.22m 12'4" x 10'7"

Kitchen/Dining/Family

6.42m x 4.96m 21'1" x 16'3"

Utility

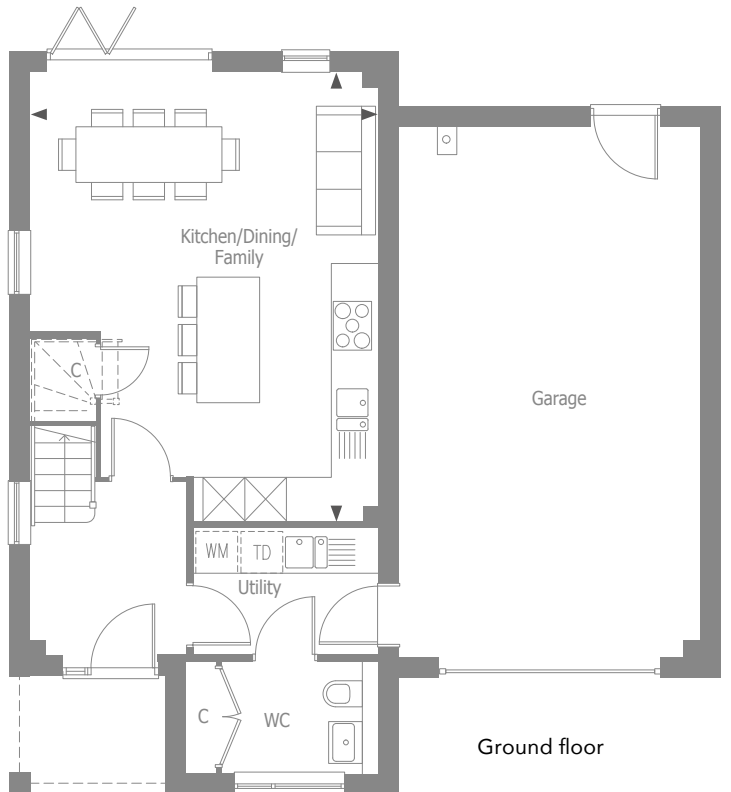
2.63m x 1.81m 8'8" x 5'11"

Terrace

7.60m x 4.32m 24'9" x 14'1"

Total

1925 sq ft



- Provision for washing machine
- Provision for tumble dryer
- Cupboard
- Wardrobe



THAKEHAM

01293 225 614
mywoodgate.co.uk

Floorplans shown are for approximate measurements only. All measurements may vary within a tolerance of 5% and are not intended to be used for carpet or appliance sizes or items of furniture. Furniture layouts are indicative only. Accordingly, due to Thakeham's policy of continuous improvement, the finished product may vary from the information provided. All customers are advised to contact Thakeham to ascertain the availability of any particular property. April 2022.